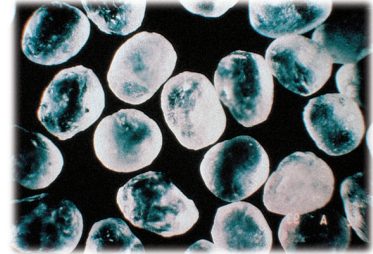


SILICA SAND

WASHED AND DRIED



Typical Analysis - Percent Retained on each Mesh

Microns	Mesh Size	480	460	430	420	410	530	520	510	730
850	20	0.0	0.0	0.0	0.0	0.0	0.0	0.0	0.0	0.0
600	30	13.1	0.7	0.1	0.1	0.0	0.0	0.0	0.0	0.0
425	40	73.9	60.7	30.9	18.8	11.2	1.2	0.7	0.0	0.0
300	50	12.0	34.5	45.2	37.5	31.2	25.6	22.2	8.7	2.2
212	70	0.9	3.8	19.4	28.3	33.4	39.9	36.3	27.8	14.7
150	100	0.0	0.3	3.8	12.2	18.2	24.6	27.7	41.7	47.5
106	140	0.0	0.0	0.6	2.9	5.4	7.6	11.2	17.9	28.8
75	200	0.0	0.0	0.0	0.2	0.6	1.1	1.9	3.8	6.4
53	270	0.0	0.0	0.0	0.0	0.0	0.0	0.0	0.1	0.4
<53	Pan	0.0	0.0	0.0	0.0	0.0	0.0	0.0	0.0	0.0
AFS/GFN		30	34	40	46	51	57	60	70	80

Wedron Silica Co. PO Box 119 • Wedron, IL 60557
 Telephone: 800-255-7263 • Fax: 269-465-6075
 sales@fairmountminerals.com • www.fairmountminerals.com

Typical Physical & Chemical Properties

% LOI	0.07
pH	7.0
ADV	1.0
Grain Shape	Rounded
% SiO ₂	99.65
% Al ₂ O ₃	0.065
% Fe ₂ O ₃	0.018
% TiO ₂	0.011
% CaO	0.012

Warning - Contains Free Silica. Do Not Breathe Dust. Prolonged exposure to dust may cause delayed lung injury (silicosis). Monographs on the Evaluation of the Carcinogenic Risk of Chemicals to Humans (vol 68, 1997) concludes that there is sufficient evidence in humans for the carcinogenicity of inhaled crystalline silica in the forms of quartz and cristobalite (Group I) in certain industrial circumstances, but that carcinogenicity may be dependent on inherent characteristics of the crystalline silica or on external factors affecting its biological activity or distribution activity or distribution of its polymorphs. See Material Safety Data Sheet for detailed information. CAS 14808-60-7 **FOR INDUSTRIAL USE ONLY.**

IMPORTANT: The technical data herein is believed to be accurate. It is offered for your consideration, investigation and verification. Buyer assumes all risk of use, storage and handling of the product.